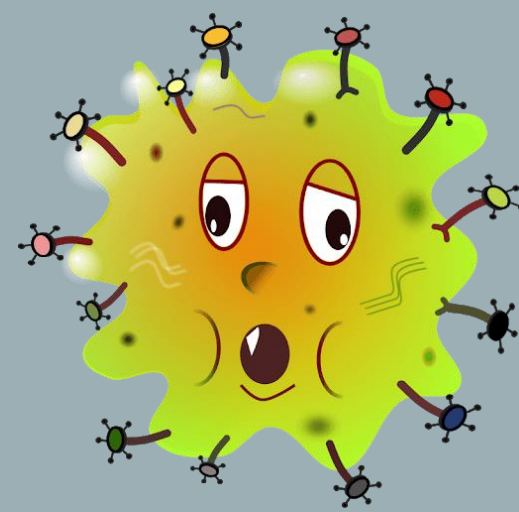


# THE EFFECTS OF NAPHTHALENE ON THE ENVIRONMENT

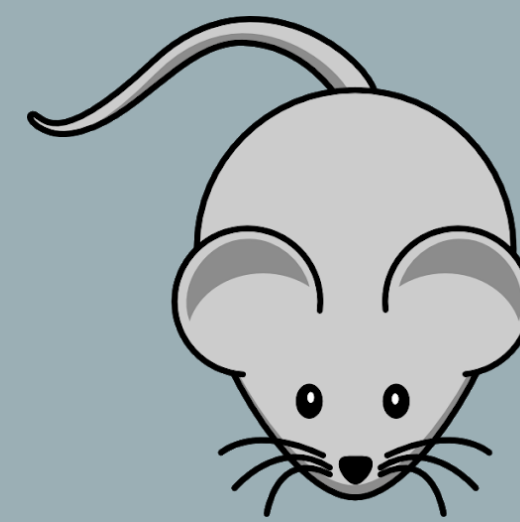
Naphthalene is a type 2 carcinogen that metabolizes in the body through oxidative transformation. It can be found in the atmosphere, water, soil as well as day to day products such as insecticides, deodorizers, toys, antiseptics, mothballs and tobacco smoke. It enters the body mainly through a gaseous form, but it can also be ingested or absorbed dermally.

## Microorganisms



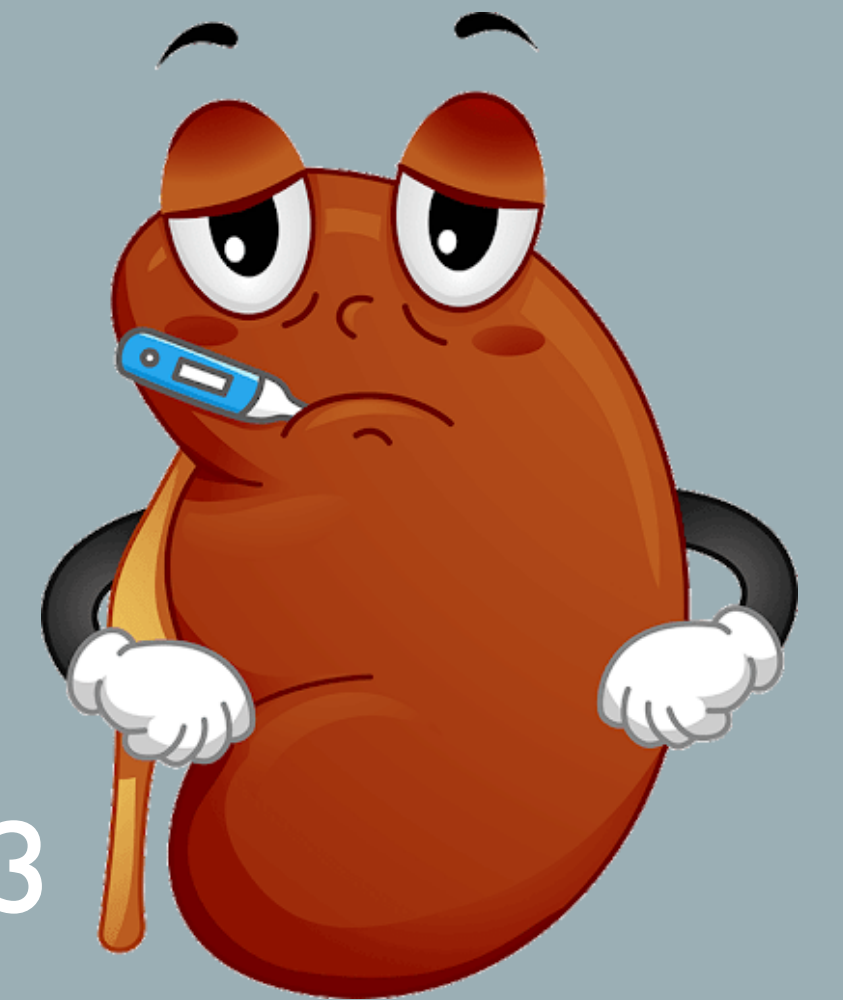
Saturating soil bacteria in 48 hour cycles with methanol solutions of naphthalene at different concentrations resulted in an inhibition rate of 90% and 65% in different species

## Rats



Important for small animals as it is used for lice control and wounds. Inhalation tests were done, exposing rats to different concentrations for weeks. Neuroblastoma and adenoma of the olfactory epithelium was observed

## Humans



1273 poisoning cases in 2013  
Can cause hemolytic anemia, methemoglobinemia, renal failure. It can be transmitted through the placenta causing renal failure, hypertension and respiratory failure (bronze baby syndrome)

What can we do about it?

